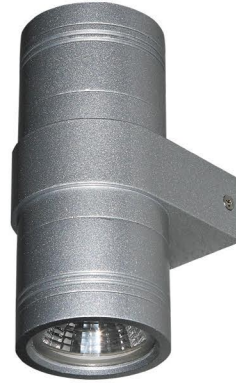


Wall Mounting Landscape Light



R7BA0128



R7BB0227

LED Colour Temperature

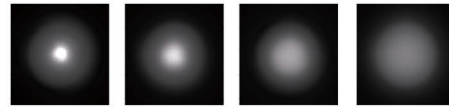
- 3000K
- 6000K

Optics



R8
R0115C050XL 15°
R0124C050XL 24°
R0138C050XL 38°
R0150C050XL 50°

R8



15°

24°

38°

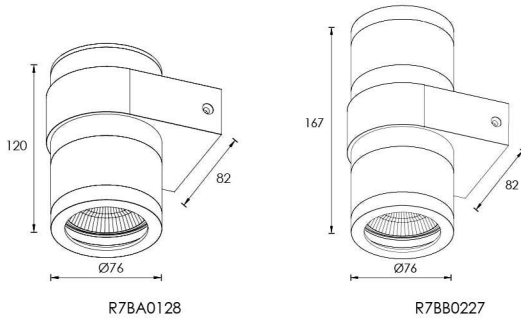
60°

Housing color option

Sanded Brown RAL 8019	Sanded Black RAL 9005	Sanded White RAL 9003

Outer Dimensions

Unit:mm

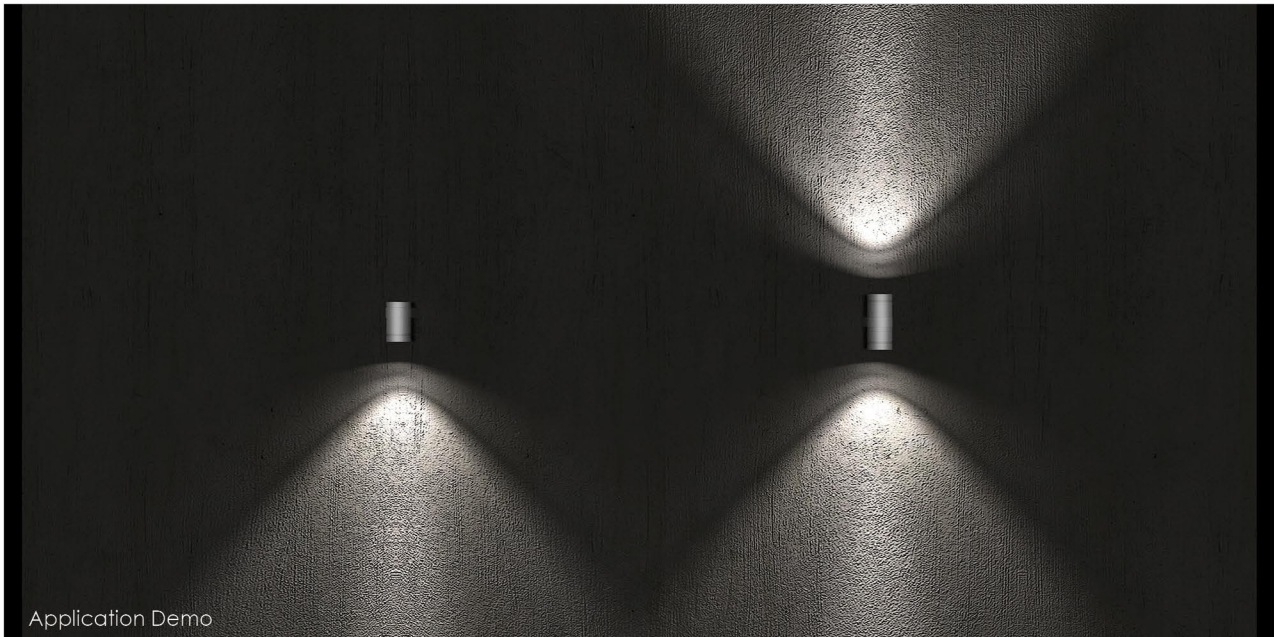


R7BA0128

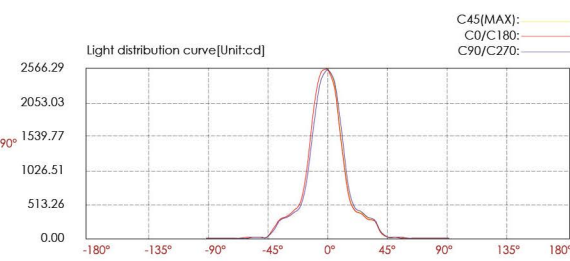
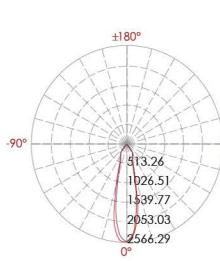
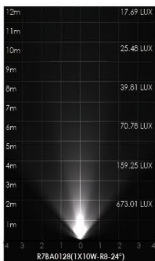
R7BB0227

Material specifications

Housing	12# Die-casting dark grey powder coated aluminum. T=60-80µm.Adhesion of ISO class 1/ASTM class 4B
Reflector	Optical Reflector, efficiency≥85%
Light Window	PMMA T=6mm
LED Driver	Constant Voltage Input,Constant Current Output
LED	NICHIA
Power Cable	H05RN-F 2X1.0mm ² L=0.3m(low voltage) H05RN-F 3X1.0mm ² L=0.3m(High voltage)
Operating temperature	-20°C~40°C



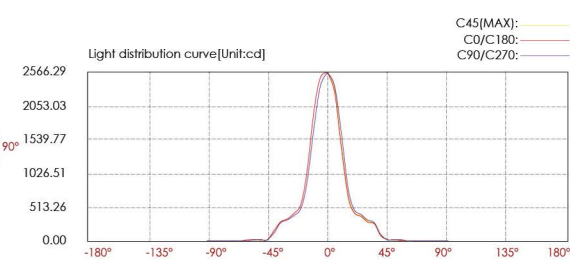
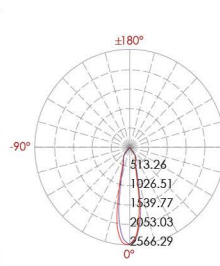
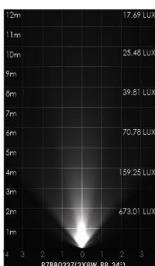
Item	Light source	Reflector	The manufacturer selected lens degree(°)θ1/2	Input voltage(V)	Typical operating current(mA)	Typical consumption(W)	Typical luminance(lm)
R7BA0128	1×10W COB	R8	24°	24V DC 120/240	24V = 480 120V = 107 240V = 60	24V = 11.5 120V = 12.6 240V = 12.6	Cool white = 1018 Warm white = 956
R7BB0227	2×8W COB	R8	24°	24V DC 120/240	24V = 822 120V = 182 240V = 103	24V = 19.7 120V = 21.0 240V = 21.0	Cool white = 1018x2 Warm white = 956x2



Lux distance cure

Distance	Center beam LUX	Beam width V	Beam width H
2m	637.01 LUX	0.9m	0.9m
4m	159.25 LUX	1.8m	1.8m
6m	70.78 LUX	2.7m	2.7m
8m	39.81 LUX	3.6m	3.6m
10m	25.48 LUX	4.5m	4.5m
12m	17.69 LUX	5.3m	5.4m

Ver.Spread:25.1 Horiz.Spread:25.2



Lux distance cure

Distance	Center beam LUX	Beam width V	Beam width H
2m	637.01 LUX	0.9m	0.9m
4m	159.25 LUX	1.8m	1.8m
6m	70.78 LUX	2.7m	2.7m
8m	39.81 LUX	3.6m	3.6m
10m	25.48 LUX	4.5m	4.5m
12m	17.69 LUX	5.3m	5.4m

Ver.Spread:25.1 Horiz.Spread:25.2

For more photometric data , please access Kapego website www.kapego.com