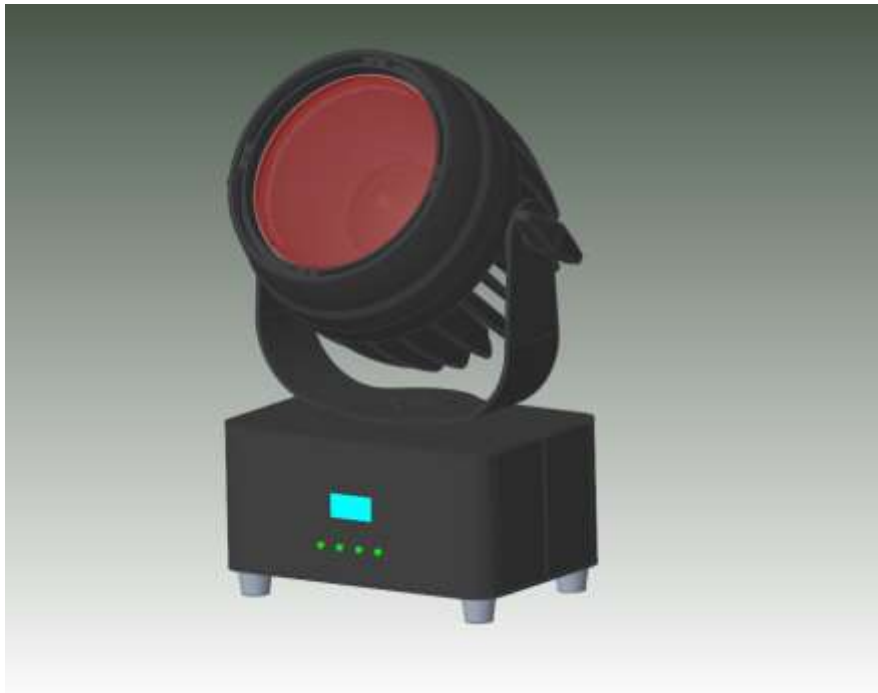




ONE-FC



User Manual

TABLE OF CONTENTS

1. Before you work	2
1.1 Packing instructions	2
1.2 AC Power.....	2
1.3 Safety instruction	2
2. Specification	3
3. Accessories	4
4. How to set up the unit	4
4.1 Rear panel	4
4.2 Main function	4
5. DMX512 configuration	6
5.1 Master/slave	6
5.2 DMX controller	6
5.3 DMX512 configuration	7.8.9.10
6. DMX512 connection	10
7. Troubleshooting	11
8. Fixture cleaning	11

1. Before you work



WARNING

Please read the instructions carefully which includes important information about the installation, operation and maintenance.

1.1 Packing instructions :

When you get this product, please take it from carton carefully to make sure whether all the accessories are in and damaged or not. When you find that there are any parts or wrong sign with the carton, or non-operation, please inform us and to keep the carton and shipping bill completely.

1.2 AC Power:

Please check the manual before you operate the light. The rating current of the light listed which shows the average current-consume under the normal circumstances.

All the lights must be offered shoot-through circuit, it could not be connected dimmer circuit, although the dimmer channels are completely for 1-100% switch.

Before the light's working, please confirm the correct voltage.

1.3 Safety instruction:

Please confirm the same voltage to the light.

Please confirm there is no flammable material around the light.

The light must be set up the ventilating place. The distance is ≥ 51 cm around approach material. To check the air passage is OK at any time.

The Maximum temperature is $\leq 40^{\circ}\text{C}$ (104°F).

When the lights has problems, please stop to use to contact the supplier. Don't repair it by yourself!

Don't connect by a dimmer.

To confirm the power wire is straight and non-damaged. Don't pull it directly.

Don't look at the bulb when the light is working to avoid any hurt.

2. Specification:

● Input voltage:	AC 100~240V, 50/60Hz
● Power consumption:	WW/100W RGBO/100W
● Rated power:	100W
● Light source:	COB 100W(warm white)+RGBO each 25W
● Life of LED:	50000 hours
● Field angle:	60°
● Dimming:	0-100% linear dimming
● Dimming curve:	4 kinds of dimming curves
● Dimming mode:	2K-14K
● Control mode:	DMX512,RDM, master/slave, auto-running, sound-active
● CRI:	Ra≥90
● CCT:	1100K/2700K
● Display	OLED1.3 inch display
● DMX channel:	1/5/7/8/9/10/12CH
● DMX connection:	3pin XLR or 5Pin XLR
● Power connection:	Powercon in/out
● IP rate:	IP20
● Dimension:	220*150*288.61mm
● N.W:	3.6 Kgs

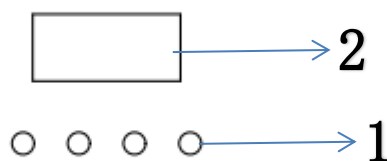
3. Accessories

1.5m POWERCON 1pcs

1.5m 3pin DMX cord 1pcs

4. How to set up the unit

4.1. Rear panel



1. Buttons

MENU	Go to menu selection
▲ DOWN	Go to the next option
▼ UP	Go back to the previous option
ENTER	Confirm the selected function

2. Display: **OLED 1.3 inch display, show menu and selected functions.**

4.2. Main function

Turn on the light, press the **MENU** button to enter the menu mode, use the **UP** and **DOWN** buttons to find the menu, when the preset menu is displayed on the display screen, press the **ENTER** button to confirm, use the **UP** and **DOWN** buttons to select the sub menu, press the **ENTER** button to save the settings or automatically return to the previous menu. Press the **MENU** button to return, or wait for one minute and then exit the menu mode automatically. When there is no power connection, press **UP** button for 1 minute to enter the menu mode. After setting, press **MENU** button or wait for 1 minute to exit the power-off setting function automatically.

No.	English	Function specification	
1	DMX Mode * 25°C 12CH A001	DMX512 mode (25°C) temperature information (1/5/7/8/9/10/12CH) channel mode adjustable (A001) DMX address adjustable (*) DMX512 signal light	
2	Jump Mode 25°C 001 effects 255 speed	Jump mode	
3	Gradient 25°C 001effects 255 speed	Gradient mode	
4	sound Mode 25°C 001 Scenes 001 effect	Sound mode	
5	Static Mode 25°C 255 red 255 green 255 blue 255 white 255 orange	Static mode	
6	Set up 25°C		
	Language	English	Language selection default (English)
	Inverted	Turn on/shutdown	screen inverted default (shutdown)
	Screensaver	Turn on/shutdown	screensaver default (shutdown)

Fan mode	Controlled/Often turn	Fan mode default (controlled) note: control by temperature
DMX signal	Maintain/Clear	No signal default (maintain)
Dimming bit	16bt/08bt	Dimming bit default (16) bit
Refresh rate	2-14K	Refresh rate default (14)
Dimming curve	Linear/square/anti-square/S-line	Dimming curve select default (linear)
Thermometer	°F/°C	°F/°C default (°C)
Reset	Determine/give up	default (give up)

DMX Address

Select the **DMX address**, press **ENTER** to confirm, and the current **DMX address** will be displayed on the display. Use **UP / DOWN** button to select **001-512** address, and press **ENTER** button to save. Press the **MENU** button to return to the previous menu or wait one minute for the menu mode to exit automatically.

Channel Set

Select the **Channel Mode**, press **ENTER** to confirm, and the current **Channel Mode** will be displayed on the display. Use **UP / DOWN** button to select 1/5/7/8/9/10/12CH Mode, and press **ENTER** button to save. Press the **MENU** button to return to the previous menu or wait one minute for the menu mode to exit automatically.

M/S Mode

Select the **Slave Mode**, press **ENTER** to confirm, and the current **Slave Mode** will be displayed on the display. Use **UP / DOWN** button to select **Master/Slaver**, and press **ENTER** button to save. Press the **MENU** button to return to the previous menu or wait one minute for the menu mode to exit automatically.

Sound Sense

Select the **Sound Sense**, press **ENTER** to confirm, and the current **Sound Sense** will be displayed on the display. Use **UP / DOWN** button to select **0-100**, and press **ENTER** button to save. Press the **MENU** button to return to the previous menu or wait one minute for the menu mode to exit .

Dimmer Curve

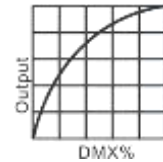
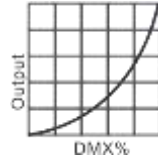
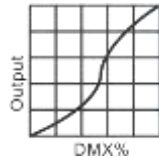
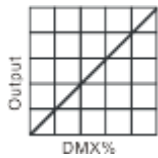
Select the **Curve**, press **ENTER** to confirm, and the current **Curve** will be displayed on the display. Use **UP / DOWN** button to select **Linear** or **Sine1** or **Sine2** or **Para** or **off**, and press **ENTER** button to save. Press the **MENU** button to return to the previous menu or wait one minute for the menu mode to exit .

linear

S-Curve

Sq Law

Inv Sq



Auto Test

Select the **Auto Test**, press **ENTER** to confirm, The light will be automatically detected. Press the **MENU** button to return to menu mode.

5. How to control

You can operate the unit in three ways:

1. By master/slave built-in preprogrammed function
2. By DMX controller
3. RDM

5.1. Master/Slave Built In Preprogrammed Function

By linking the units in **Master/Slave** connection, the first unit will control the other units to give an automatic, sound activated, synchronized light show

5.2. DMX Controller

Using universal DMX controller to control the units, you have to set **DMX address** from 1 to 512 channel so that the units can receive DMX signal.

Press the **MENU** button up to when the **DMX Address** is showing on the display. Pressing **ENTER** button and the display will blink. Use **DOWN / UP** button to change the DMX512 address.

Channel mode	Unit 1 dmx address	Unit 2 dmx address	Unit 3 dmx address	Unit 4 dmx address
1	1	2	3	4
5	5	10	15	20
7	7	14	21	28
8	8	16	24	32
9	9	18	27	36
10	10	20	30	40
12	12	24	36	48

5.3. DMX512 configuration

DMX512 configuration(CH1)

No.	Function	Specification
1 CH	Dim all	master dimmer, linear dimmer, from dark to light

DMX512 configuration(CH5)

No.	Function	Specification
1 CH	red	
2 CH	green	
3 CH	blue	
4 CH	warm white	
5 CH	orange	

DMX512 configuration(CH7)

No.	Function	Specification
1 CH	Dim all	
2 CH	strobe all	
3 CH	red	
4 CH	green	
5 CH	blue	
6 CH	warm white	
7 CH	orange	

DMX512 configuration(CH8)

No.	Function	Specification
1 CH	Dim all	
2 CH	fine master dimmer	
3 CH	strobe all colors	
4 CH	red	
5 CH	green	
6 CH	blue	
7 CH	warm white	
8 CH	orange	

DMX512 configuration(CH9)

No.	Function	Specification
1 CH	master dimmer	
2 CH	strobe all colors	
3 CH	red	
4 CH	green	
5 CH	blue	
6 CH	warm white	
7 CH	orange	
8 CH	function select	000-005 no function 006-024 jump 1 025-034 jump 2 035-044 jump 3

		045-054 jump 4 055-064 jump 5 065-074 jump 6 075-084 jump 7 085-094 jump 8 095-104 jump 9 105-114 jump 10 115-124 jump 11 125-134 jump 12 135-143 Gradient 1 144-153 Gradient 2 154-163 Gradient 3 164-173 Gradient 4 174-183 Gradient 5 184-193 Gradient 6 194-203 Gradient 7 204-213 Gradient 8 214-223 Gradient 9 224-233 Gradient 10 234-243 Gradient 11 244-253 Gradient 12 254-255 Gradient 13
9 CH	function speed	function speed, from slow to fast

DMX512 configuration(CH10)

No.	Function	Specification
1 CH	red	
2 CH	Red fine dimmer	
3 CH	green	
4 CH	Green fine dimmer	
5 CH	blue	
6 CH	Blue fine dimmer	
7 CH	Warm white	
8 CH	Warm white fine dimmer	
9 CH	orange	
10 CH	Orange fine dimmer	

DMX512 configuration(CH12)

No.	Function	Specification
1 CH	master dimmer	
2 CH	fine master dimmer	
3 CH	Warm white strobe	
4 CH	RGBO strobe	
5 CH	red	
6 CH	green	

7 CH	blue	
8 CH	Warm white	
9 CH	orange	
10 CH	function select	000-005 no function 006-024 jump 1 025-034 jump 2 035-044 jump 3 045-054 jump 4 055-064 jump 5 065-074 jump 6 075-084 jump 7 085-094 jump 8 095-104 jump 9 105-114 jump 10 115-124 jump 11 125-134 jump 12 135-143 Gradient 1 144-153 Gradient 2 154-163 Gradient 3 164-173 Gradient 4 174-183 Gradient 5 184-193 Gradient 6 194-203 Gradient 7 204-213 Gradient 8 214-223 Gradient 9 224-233 Gradient 10 234-243 Gradient 11 244-253 Gradient 12 254-255 Gradient 13
11 CH	Function select	function speed, from slow to fast
12 CH	Color selection	000-004 no function 005-019 color select 1 020-034 color select 2 035-049 color select 3 050-064 color select 4 065-079 color select 5 080-094 color select 6 095-109 color select 7 110-124 color select 8 125-139 color select 9 140-154 color select 10 155-169 color select 11 170-184 color select 12 185-199 color select 13 200-214 color select 14 215-229 color select 15 230-244 color select 16 245-255 color select 17

6. DMX512 Connection

Mode connection:

1. Connect the fixture together in a “daisy chain” by XLR plug cable from the output of the fixture to the input of the next fixture. The cable cannot be branched or split to a “Y” cable. Inadequate or damaged cables, soldered joints or corroded connectors can easily distort the signal and shut down the system
2. The DMX output and input connectors are pass-through to maintain the DMX circuit when one of the units’ power is disconnected.
3. At last fixture, the DMX cable has to be terminated with a terminator to reduce signal errors. Solder a 120-ohm 1/4W resistor between pin 2(DMX-) and pin 3(DMX+) into a 5-pin XLR-plug and plug it in the DMX-output of the last fixture.
4. Each lighting fixture needs to have an address set to receive the data sent by the controller. The address number is between 0-511 (usually 0 & 1 are equal to 1).
5. 5 pin XLR connectors:
5 pin XLR: Pin 1: GND, Pin 2: Negative signal (-), Pin 3: Positive signal (+) 4:Blank 5:Blank

7. Troubleshooting

Following are a few common problems that may occur during operation. Here are some suggestions for easy troubleshooting:

- **The fixture does not work, no light**

1. Check the connection of power and main fuse.
2. Measure the mains voltage on the main connector.

- **Not responding to DMX controller**

1. DMX LED should be on. If not, check DMX connectors, cables to see if link properly.
2. If the DMX LED is on and no response to the channel, check the address settings and DMX polarity.
3. If you have intermittent DMX signal problems, check the pins on connectors or on PCB of the fixture or the previous one.
4. Try to use another DMX controller.
5. Check if the DMX cables run near or run alongside to high voltage cables that may cause damage or interference to DMX interface circuit.

8. Fixture Cleaning

The cleaning of internal must be carried out periodically to optimize light output. Cleaning frequency depends on the environment in which the fixture operates: damp, smoky or particularly dirty surrounding can cause greater accumulation of dirt on the fixture's optics.

- Clean with soft cloth using normal glass cleaning fluid.
- Always dry the parts carefully.
- Clean the external optics at least every 20 days. Clean the internal optics at least every 30/60 days.