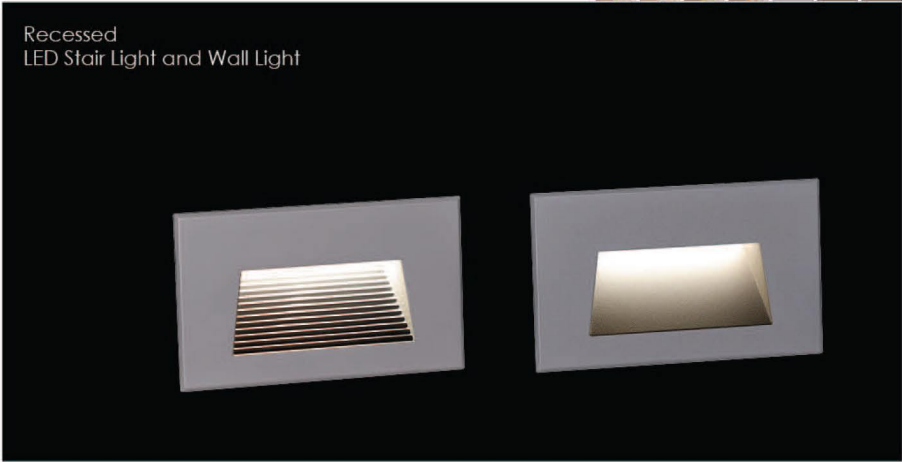


Recessed LED Stair Light and Wall Light



LED Colour Temperature

- 2000K
- 3000K
- 6000K

Optics

- N/A

Front Cover Color Option

Basic

Sanded Dark Grey
KAP 7037



Secondary

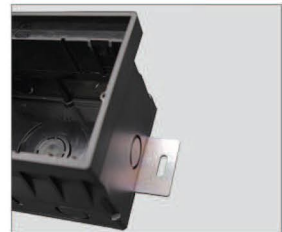
Silver Grey
KAP 9022



Sanded Black
RAL9005



The clips have been specially modified and upgraded to have a stronger structure in order to make up the absence of the screw fixing.

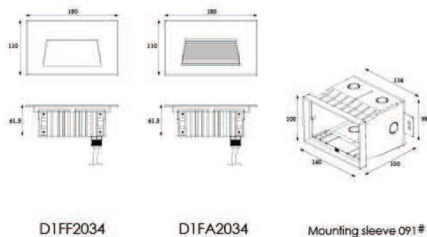


There are two metal support plates on the bottom of the sleeve. It is used for fixing and preventing the mounting sleeve shifting while filling the concrete. These will simply install and electrician while they are recessing the sleeves.



Outer Dimensions

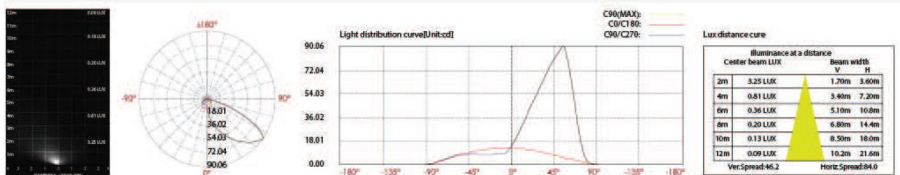
Unit:mm



Material specifications

Housing	12° Die-casting grey powder coated aluminum, T=60-80um Adhesion of ISO class 1/ASTM class 4B
Front cover	12° Die-casting aluminum RAL7037 powder coated T=60-80um, Adhesion of ISO class 1/ASTM class 4B;
LED	SMD3030 type LED
Cable gland	IP-67 copper and nicked coated
Gasket	Molding shaped silicone seal
LED Driver	Constant Voltage Input, Constant Current Output
Operating temperature	-20°C~40°C
Power Cable	H05RN-F 2X1.0mm ² L=0.5m (low voltage) H05RN-F 3X1.0mm ² L=0.5m (high voltage)
Mounting sleeve	ABS 091#
Dimmable Support	Triac PWM 1-10V Dali

Item	Light source	Input voltage[V]	Typical operating current[ma]	Typical consumption[W]	Typical luminance[lm]	IK rate
D1FA2034	20°×0.2W	24V DC 120/240	24V = 227 120V = 102 240V = 57	24V = 5.6 120V = 6.8 240V = 6.8	Cool white =103 Warm white =96.5	10
D1FF2034	20°×0.2W	24V DC 120/240	24V = 227 120V = 101 240V = 56	24V = 5.6 120V = 6.8 240V = 6.8	Cool white =113.7 Warm white =104.3	10



For more photometric data , please access Kapego website www.kapego.com