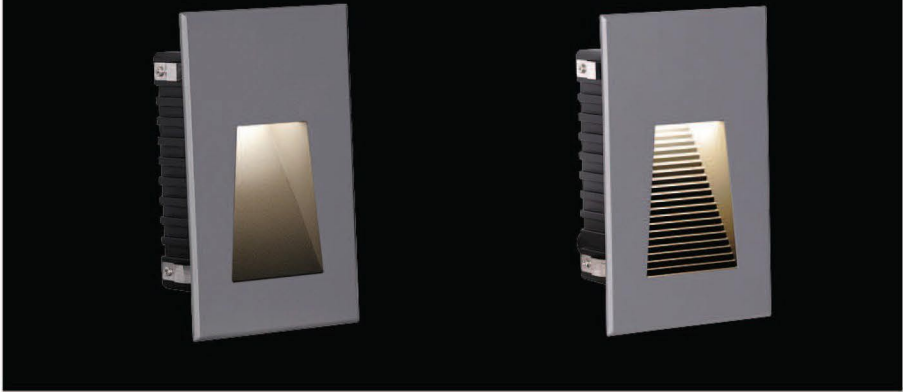


Recessed LED Stair Light and Wall Light



LED Colour Temperature

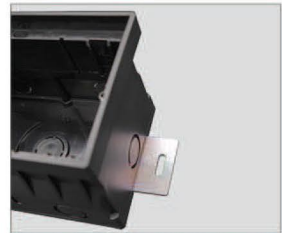
- 2000K
- 3000K
- 6000K

Optics

- N/A



The clips have been specially modified and upgraded to have a stronger structure in order to make up the absence of the screw fixing.

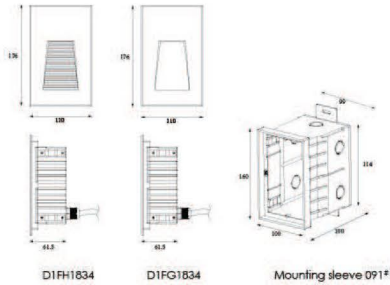


There are two metal support plates on the bottom of the sleeve. It is used for fixing and preventing the mounting sleeves shifting while filling the concrete. These will simply installer and electrician while they are recessing the sleeves.

Outer Dimensions

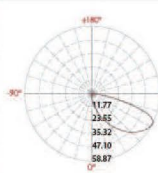
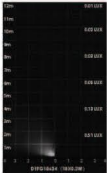
Unit:mm

Material specifications



Housing	12° Die-casting grey powder coated aluminum, T=60-80um Adhesion of ISO class 1/ASTM class 4B
Front cover	12° Die-casting aluminum RAL7037 powder coated T=20-30um Adhesion of ISO class 1/ASTM class 4B
LED	SMD3030 type LED
Cable gland	IP67 copper and nicked coated
Gasket	Molding shaped silicone seal
LED Driver	Constant Voltage Input, Constant Current Output
Operating temperature	-20°C~40°C
Power Cable	HOSRN-F 2X1.0mm ² L=0.5m (low voltage) HOSRN-F 3X1.0mm ² L=0.5m (high voltage)
Mounting sleeve	ABS 091F
Dimmable support	Triac PWM 1-10V Dali

Item	Light source	Input voltage(V)	Typical operating current(mA)	Typical consumption(W)	Typical luminance(lm)	IK rate
D1FG1834	18×0.2W	24V DC 120/240	24V = 240 120V = 103 240V = 57	24V = 5.5 120V = 7.0 240V = 7.0	Cool white =58.0 Warm white =45.6	10
D1FH1834	18×0.2W	24V DC 120/240	24V = 230 120V = 103 240V = 57	24V = 5.5 120V = 7.0 240V = 7.0	Cool white =54.8 Warm white =43	10



Lux distance cure

Center beam LUX	Beam width	V	H
0.51 LUX	1.8m	1.70m	
0.13 LUX	3.5m	3.50m	
0.06 LUX	5.2m	5.20m	
0.04 LUX	7.0m	7.00m	
0.03 LUX	8.0m	8.70m	
0.01 LUX	10.6m	10.4m	

View speed: 47.5
Horizontal: 47.1

For more photometric data , please access Kapego website www.kapego.com